

ROMA INSULATION SYSTEMS

Product range

Everything you need to know
about ROMA and our products
in one document.

New
U-values!



» Individual solutions from ROMA are developed by competent employees who understand the needs of their customers. «

Miriam Neidlinger (Technology Dept.)

SO EVERYTHING FITS. **ROMA**

» Believing is one thing.
With ROMA you really know.«

ROMA production employee Franz Lechner has ensured consistently high quality for over 30 years.



PIR wall panels, type P

ROMA quick-assembly insulating panels, type P, combine a lightweight design with wide purlin spacing, straightforward joint technology and logical instructions for easy, time-saving assembly. The uniquely designed double tongue-and-groove joints, with a labyrinth effect, are free of thermal bridges and remilled to ensure airtight construction of exterior walls. You also benefit from the versatility of our insulating panels, which can be used as wall or roof panels.

Panel type		P045	P060	P080	P100	P120	P140	P170	P200	P220
Panel thickness	mm	45	60	80	100	120	140	170	200	220
Cladding layers										
External	mm	0.6	0.6	0.6	0.6	0.6	0.6	0.6	0.6	0.6
Internal	mm	0.5	0.5	0.5	0.5	0.5	0.5	0.5	0.5	0.5
Panel weight approx.	kg/m ²	11.1	11.7	12.5	13.3	14.1	14.9	16.1	17.3	18.1
U-value certified to EN 14509 with joint ¹⁾	W/(m ² ·K)	0.540	0.388	0.285	0.226	0.187	0.160	0.131	0.111	0.101



The module width for all PIR type P wall panels is 1150mm.



PIR wall panels, type M

ROMA quick-assembly insulating panels, type M, with concealed fittings, enable an aesthetic and highly varied design of structural surfaces, while remaining cost-efficient. With ROMA, you can achieve highly attractive architecture for industrial and commercial buildings even under demanding conditions.

Panel type		M060	M080	M100	M120	M140	M170
Panel thickness	mm	60	80	100	120	140	170
Cladding layers							
External	mm	0.6	0.6	0.6	0.6	0.6	0.6
Internal	mm	0.5	0.5	0.5	0.5	0.5	0.5
Panel weight approx.	kg/m ²	12.7	13.5	14.3	15.1	15.9	17.1
U-value certified to EN 14509 with joint ¹⁾	W/(m ² ·K)	0.448	0.300	0.234	0.192	0.163	0.133



The module width for all PIR type M wall panels is 1000mm.



MW wall panel, type FP

Our type FP fireproof wall panel with its noncombustible insulating stone wool core delivers outstanding fire protection and soundproofing and is perfect for external wall construction and extensions inside buildings. This panel model is available in eight insulating thicknesses and two densities.

Panel type		FP060	FP080	FP100	FP120	FP140	FP170	FP200	FP240
Density	kg/m ³	100							
Panel thickness	mm	60	80	100	120	140	170	200	240
Cladding layers									
External	mm	0.6	0.6	0.6	0.6	0.6	0.6	0.6	0.6
Internal	mm	0.5	0.5	0.5	0.5	0.5	0.5	0.5	0.5
Panel weight approx.	kg/m ²	15.3	17.3	19.3	21.3	23.3	26.3	29.3	33.3
U-value certified to EN 14509 with joint	W/(m ² ·K)	0.701	0.521	0.417	0.347	0.298	0.246	0.209	0.175
Panel type		FP+060	FP+080	FP+100	FP+120	FP+140	FP+170	FP+200	FP+240
Density	kg/m ³	135							
Panel weight approx.	kg/m ²	17.4	20.1	22.8	25.5	28.2	32.2	36.3	41.7
U-value certified to EN 14509 with joint	W/(m ² ·K)	0.760	0.566	0.453	0.378	0.325	0.268	0.228	0.191



The module width for all MW type FP wall panels is 1150mm.

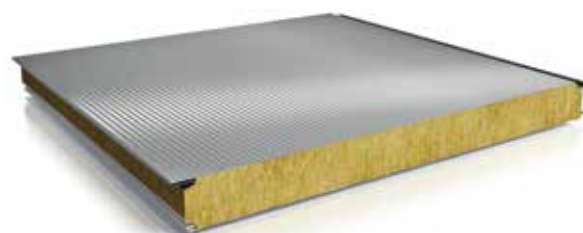


1) λ_{declared} = 0,022 [W/mK]

MW wall panel, type FV

Our type FV noncombustible wall panel with its insulating, noncombustible stone wool core comes in eight different insulating thicknesses and two densities. ROMA thus offers solutions for fire protection and soundproofing meeting a wide range of requirements. The fine microprofiling and hidden fixing allow aesthetic wall and façade designs.

Panel type		FV060	FV080	FV100	FV120	FV140	FV170	FV200	FV240
Density	kg/m ³	100							
Panel thickness	mm	60	80	100	120	140	170	200	240
Cladding layers									
External	mm	0.6	0.6	0.6	0.6	0.6	0.6	0.6	0.6
Internal	mm	0.5	0.5	0.5	0.5	0.5	0.5	0.5	0.5
Panel weight approx.	kg/m ²	15.6	17.6	19.6	21.6	23.6	26.6	29.6	33.6
U-value certified to EN 14509 with joint	W/(m ² ·K)	0.675	0.549	0.461	0.356	0.305	0.250	0.212	0.177
Panel type		FV+060	FV+080	FV+100	FV+120	FV+140	FV+170	FV+200	FV+240
Density	kg/m ³	135							
Panel weight approx.	kg/m ²	17.7	20.4	23.1	25.8	28.5	32.6	36.6	42.0
U-value certified to EN 14509 with joint	W/(m ² ·K)	0.731	0.597	0.469	0.388	0.332	0.272	0.231	0.193



The module width for all MW type FV wall panels is 1000mm.

MW acoustic panel, type FP

Do you require construction elements for acoustic absorption and improving room acoustics? The ROMA MW acoustic panel, type FP, featuring a rock wool insulating core and one-sided perforated sheet steel is just what you need. A layer of black fiberglass matting between the stone wool and perforated plate provides trickling protection. ROMA FP+120 acoustic panel is certified for the highest acoustic absorption class A.

Panel type (acoustic)		FP060	FP080	FP100	FP120	FP140	FP170	FP200	FP240
Density	kg/m ³	100							
Panel thickness	mm	60	80	100	120	140	170	200	240
Cladding layers									
External	mm	0.5	0.5	0.5	0.5	0.5	0.5	0.5	0.5
Internal	mm	0.6	0.6	0.6	0.6	0.6	0.6	0.6	0.6
Panel weight approx.	kg/m ²	15.1	17.1	19.1	21.1	23.1	26.1	29.1	33.1
U-value certified to EN 14509 with joint	W/(m ² ·K)	0.701	0.521	0.417	0.347	0.298	0.246	0.209	0.175
Panel type (acoustic)		FP+060	FP+080	FP+100	FP+120	FP+140	FP+170	FP+200	FP+240
Density	kg/m ³	135							
Panel weight approx.	kg/m ²	17.2	19.9	22.6	25.3	28.0	32.0	36.1	41.5
U-value certified to EN 14509 with joint	W/(m ² ·K)	0.760	0.566	0.453	0.378	0.325	0.268	0.228	0.191

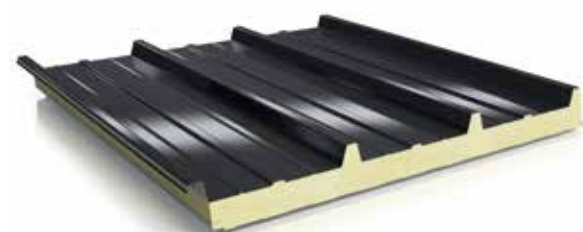


The module width for all MW type FP acoustic panels is 1150mm.

PIR roof panels, type D

ROMA quick-assembly insulating panels, type D, feature factory-equipped triple sealing which meets the highest standards in thermal insulation and moisture protection. The high rigidity and load capacity of these panels allow wider support spacing. Longer panel lengths and a lightweight design make construction projects highly cost efficient.

Panel type		D072	D082	D102	D122	D142	D162	D182
Panel thickness	mm	72	82	102	122	142	162	182
Insulation thickness (without beading)	mm	30	40	60	80	100	120	140
Cladding layers								
External	mm	0.6	0.6	0.6	0.6	0.6	0.6	0.6
Internal	mm	0.5	0.5	0.5	0.5	0.5	0.5	0.5
Panel weight approx.	kg/m ²	11.5	11.9	12.7	13.5	14.3	15.1	15.9
U-value certified to EN 14509 with joint ¹⁾	W/(m ² ·K)	0.717	0.542	0.363	0.273	0.219	0.183	0.157



The module width for all PIR type D roof panels is 1000mm.

1) $\lambda_{\text{declared}} = 0,022$ [W/mK]

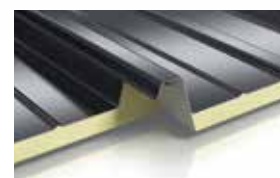
Trapez DUO 062

The ROMA Trapez DUO 062 is an ideal panel for refurbishment projects. Its PIR coating keeps condensation from forming on inner roof surfaces. A sealing strip in the overlapping bead protects against the penetration of moisture. Like all ROMA elements, the ROMA Trapez DUO can be quickly and efficiently installed. We recommend the ROMA quick-assembly insulating panels D072 to D182 for heated buildings and areas that are accessible to the public

Panel type		DUO 062
Panel weight approx.	kg/m ²	7.4
U-value certified to EN 14509 with joint	W/(m ² ·K)	1.049



The module width for Trapez DUO 062 panels is 1000mm.



Fire protection, soundproofing and thermal insulation

MW roof panel, type FD

The type FD mineral wool roof panel is the ideal complement for the type D roof panel for fire areas that need to prevent flying sparks. The geometry of the two roof types is coordinated so that laying can be carried out quickly and easily.

Panel type		FD102	FD122	FD142	FD162	FD182	FD212	FD242	FD282
Density	kg/m ³	100							
Panel thickness	mm	102	122	142	162	182	212	242	282
Insulation thickness (without beading)	mm	60	80	100	120	140	170	200	240
Cladding layers									
External	mm	0.6	0.6	0.6	0.6	0.6	0.6	0.6	0.6
Internal	mm	0.5	0.5	0.5	0.5	0.5	0.5	0.5	0.5
Panel weight approx.	kg/m ²	16.6	18.6	20.6	22.6	24.6	27.6	30.6	34.6
U-value certified to EN 14509 with joint	W/(m ² ·K)	0.658	0.501	0.405	0.340	0.293	0.242	0.207	0.173
Panel type		FD+102	FD+122	FD+142	FD+162	FD+182	FD+212	FD+242	FD+282
Density	kg/m ³	135							
Panel weight approx.	kg/m ²	18.8	21.5	24.2	26.9	29.6	33.7	37.7	43.1
U-value certified to EN 14509 with joint	W/(m ² ·K)	0.713	0.544	0.441	0.370	0.319	0.265	0.226	0.189



The module width for all MW type FD roof panels is 1000mm.



Cold-store and deep-freeze construction

PIR wall and ceiling panel, type P

ROMA type P cold-store panels offer optimal insulation thanks to its PIR rigid foam insulating core. High-precision manufacturing and a precise fit during assembly make your cold-store or deep-freeze units diffusion-resistant. Their double tongue-and-groove joint geometry allows the use of highly durable seals at four critical points.

Panel type		P045	P060	P080	P100	P120	P140	P170	P200	P220
Panel thickness	mm	45	60	80	100	120	140	170	200	220
Cladding layers										
External	mm	0.6	0.6	0.6	0.6	0.6	0.6	0.6	0.6	0.6
Internal	mm	0.6	0.6	0.6	0.6	0.6	0.6	0.6	0.6	0.6
Panel weight approx.	kg/m ²	12.1	12.7	13.5	14.3	15.1	15.9	17.1	18.3	19.1
U-value certified to EN 14509 with joint ¹⁾	W/(m ² ·K)	0.540	0.388	0.285	0.226	0.187	0.160	0.131	0.111	0.101
Roof element spans, self-supporting single-field load-bearing units depending on load type ²⁾ EN 14509 with bending										
	m	to 4.61	to 5.78	to 7.17	to 8.41	to 9.53	to 10.56	to 11.92	to 13.10	to 13.82



The module width for all PIR type P wall and ceiling panels is 1150mm.

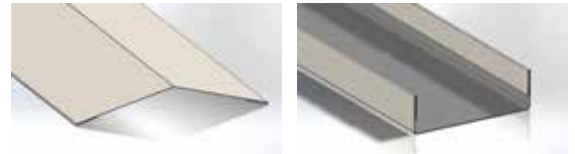


1) $\lambda_{\text{declared}} = 0,022$ [W/mK]

2) Including repair load of P = 1.0kN, both sides t = 0.6mm, profiled on both sides

Accessories

ROMA offers not only first-class products but also a broad range of accessories – with the tried and tested ROMA quality integrated in every last detail. We have everything from cover plates to fixing caps, from Internal ridge flashing to ceiling suspensions. All from a single source and specifically coordinated to each other – so that everything fits.



Ridge flashing

Element enclosure

The accessory parts depicted here are taken from our accessories catalog.

Cold-store and deep-freeze cells

Cold-store and deep-freeze cells

As a partner to the refrigeration trade, ROMA offers extensive support for your construction project. You can be sure that all requirements will be considered during planning and that your individual requirements are carried out. We focus on low energy and maintenance costs. Every cold-store cell is assembled by trained specialist personnel. They safeguard your investment because we implement your exact specifications.



Doors

Hinged and sliding doors

Industrial doors have to handle tough conditions and are subject to high dynamic loads and often extreme temperature fluctuations, too. They are designed to streamline operational workflows and be easy to use. Doors have to meet very stringent requirements regarding construction, functional mechanics, material, sealing and insulation. In addition, many different safety regulations for protecting people and building facilities have to be observed. Whether it is a matter of cold-store or industrial room doors, robust versions ensure long service life and a high level of user convenience. ROMA doors are open for any application.



Customized construction

Customized construction

Atmosphere provides protection. Safeguard the quality of your products with constant temperatures, protect your investment in machines by keeping humidity constant, minimize costs by keeping external conditions the same, protect your employees and your environment from noise, heat and exhaust through special insulation – at any time of the year and time of day. No matter what or whom you want to protect, ROMA offers you a custom design allowing you to surround your application with a protective atmosphere.



Environmental Simulations and Test Chambers

Environmental Simulations and Test Chambers

New developments, new regulations and reliable documentation of test results are the challenges faced by industry. Not only legislators set high environmental goals and require their observance. Customers also want to make their contribution and demand proof of this. The requirements for climate and test chambers are therefore based on individual adaptation to match modern testing methods. Deliver reliable results faster and with fewer trials. This delivers a financial advantage in current and future testing methods.



ROMA. So everything fits.

ROMA is a leading manufacturer of wall and roof sandwich panel elements for industrial and cold-store construction. We develop, manufacture and market complete systems for industrial construction engineering as well as cold-store and deep-freeze cell and cell door construction. Climate test chambers, cleanrooms, and specialized climate-control applications are also part of our product portfolio. We have over 70 years of success and experience in highly specialized construction sectors. Ever since its founding, our family-run company has always manufactured top quality products Made in Germany.

For more information, please visit our websites:
www.roma-daemmsysteme.de and www.roma-kuehlzellen.de



Our sales team has many years of experience and is familiar with our complete range of products and what customers need.



With over seven decades of experience, ROMA is known for its top product engineering and dependable quality.



Optimal production ensures high product availability, so that your projects run smoothly.



Thoroughly satisfied customers is the ROMA trademark – because everything fits.

Creative building design

The ROMA color palette for quick-assembly insulating panels.

Coating system	Color	Color group	Coating system	Color	Color group	Coating system	Color	Color group			
Polyester 25 µm	RAL 9010 Pure white	1	Polyester 25 µm	RAL 8004 Copper brown	3	ROMAplus 50 µm	RAL 7016 Anthracite gray	3			
	RAL 9001 Cream	1		RAL 8011 Nut brown	3		RAL 3009 Oxide red	3			
	RAL 9002 Gray white	1		RAL 8014 Sepia brown	3		RAL 9002 Gray white	1			
	RAL 7035 Light gray	1		RAL 6005 Moss green	3		Stratos	2			
	RAL 7042 Traffic gray A	2		RAL 6011 Reseda green	2		Mesos	2			
	RAL 1015 Light ivory	1		RAL 5010 Gentian blue	3		RAL 9010 Pure white	1			
	RAL 1002 Sand yellow	2		RAL 9006 White aluminum	2		RAL 9010 Pure white	1			
	RAL 1023 Traffic yellow	2		RAL 9007 Gray aluminum	2		RAL 9001 Cream	1			
	RAL 2001 Red orange	2		RAL 7016 Anthracite gray	3		RAL 9010 Pure white	1			
	RAL 3000 Flame red	3		Dark Zebrano 3D	3		RAL 9002 Gray white	1			
	RAL 3009 Oxide red	3		Golden Oak	2		Aluzinc	2			

As of: May 2017

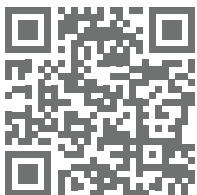
The many options offered by the color palette for ROMA sandwich panel elements gives you numerous creative design options. The basic material used in our panels is sheet steel. The sheet metal is galvanized on both sides and then a plastic color coating is applied.

Other colors and coating systems on request. Standard aluminum sheet is available with RAL 9001 or RAL 9006 polyester lacquer.

The colors listed here (such as 9002) approximate the RAL color standard. Please also note: The color patterns are print reproductions and are only approximations.

Minimum quantities apply for special colors.

Please contact us about availability and delivery date. We look forward to helping you.



For more information, please visit our website:
www.roma-daemmsysteme.de

Romakowski GmbH & Co. KG
 Herdweg 31
 86647 Bittenwiesen, Germany
 Phone +49 (0) 8274.999-0
 Fax +49 (0) 8274.999-150
info@roma-daemmsysteme.de